



**JUNIA**

HEI·ISEN·ISA

Grande  
école  
d'ingénieurs



Who  
are we?

# Study in Lille... Discover Europe!



**London** 1h20  
**Paris** 1h  
**Brussels** 30 min  
**Amsterdam** 3h

- **25%** of EU population and 5 **capitals** in a 300 km radius
- **4th** metropolis in France (1,2 million)
- **Top 3 University centers in France** (>160 000 students)



# School of Engineering

Member of Lille Catholic University



**38,500** students

**5** faculties

**20** business and engineering schools

**270** Academic programmes in

- Science & Technology
- Art and Humanities
- Medecine,
- Business, Economics & Management

→ Largest Private University in France



**+5,500**  
Incoming international students



**1,000**  
Hospital beds in a Hospital group



**546**  
Partner universities worldwide



**5,200**  
Staff members



**700**  
Researchers



**300**  
Student Unions

# Ambition: to be the Grande école of transitions

## Feeding the planet sustainably



## Accelerating the energy and urban transition



## Developing the digital and industrial transition



## Strengthening health and well-being technologies



The hybridisation of training will help us to meet the major challenges.





## Training

Training “solvers” who combine: human values, scientific and technological excellence, managerial skills, an aptitude for innovation taking a transdisciplinary and international approach.



## Business services

Supporting our learners by developing the Careers Centre’s offering (internships, jobs, careers) and promoting our training, consulting, research and transfer activities for our customers (students, companies, start-ups, organisations), by becoming a reliable, innovative and responsible actor.



## Research

Promoting the achievement of a high level of valuable research for or with our customers (companies, organisations), both in France and internationally through major laboratories.

## In figures

**5 000**  
students

**65**  
nationalities  
(students &  
teachers)

**28,000**  
graduates

**45,000 m<sup>2</sup>**  
of floor space over  
the 4 campuses

**€146**  
**million**  
of investment  
over 5 years

**Over**  
**€50**  
**million**  
in the annual  
budget

**185**  
teacher-  
researchers &  
doctoral  
students

**98%**  
enter  
professional  
employment  
within 4 months



# Academic programs



## HEI

(School of Engineering)

### "Engineers for the World"

- Public Works building
- Mechanical design
- Computing and information technology
- Innovation technologies and textile management
- Building fitting out and architecture
- Electricity systems and automated systems
- Entrepreneurship
- Mechatronics and robotics
- Medical and health engineering
- Smart cities
- Management of industrial and logistics operations
- Innovation management
- Chemical and environmental processes

## ISEN

(School of Electronics and Digital Science)

### "Engineers for the digital transition"

- Embedded electronics
  - Connected objects
  - Mobile robotics
  - Augmented reality and artificial intelligence
- Bio-nanotech
- Software and video game development
- Big data
  - Cybersecurity
  - IT and finance
  - Business engineer
- Digital Health

## ISA

(School of Agriculture and Life Sciences)

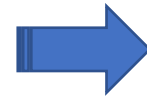
### "Engineers for the Earth"

- Agribusiness and sectors
- Sustainable agriculture & smart farming
- Food Production management
  - Sustainable product development, nutrition health option
- Sustainable product development, product ecodesign option
- Quality management systems for the agrifood industry
  - Management option (product innovation)
  - Global environmental performance management
- Sustainable management of pollution
  - Management, finance option
  - Management option trade & consumer
  - Entrepreneurship
  - Bank finance and insurance

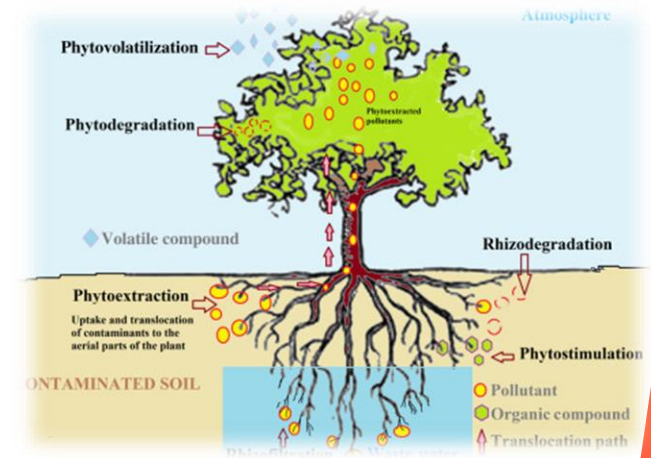
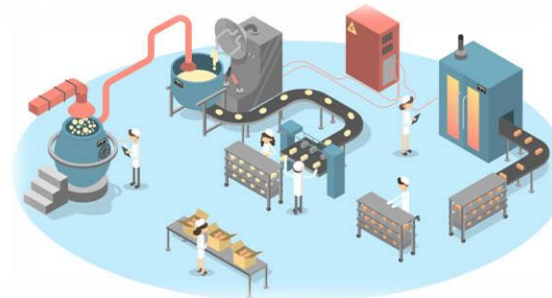
# Life Sciences – 4<sup>th</sup> year (M1)

Specialization in

- **Sustainable Management of Pollution**
- **Food Science and Technology**
- **Agricultural Sciences**



Applied classes  
Small groups  
Project-based learning  
Flipped classrooms  
Semester-long project  
2 months in internship



**European Union** program facilitating exchange mobilities between European and non European partners for

**STUDENTS  
FACULTY  
STAFF**

**WHAT THE GRANT COVERS**

**TRAVEL**  
(1500€)

**LIVING EXPENSES**  
850€ per month

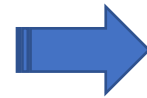
**Selection based on:**

- Academic level
- Motivation

# Computer Sciences and IT – 4<sup>th</sup> year (M1)

Specializations in

- **Software Engineering**
- **Big Data**
- **Embedded Electronics**
- **Digital Health**
- **Bio-Nanotechs**



Applied classes  
Small groups  
Project-based learning  
Flipped classrooms  
9-week technical project  
10 months in internship





# Teaching mobility

# How does it work?



## Call for Teaching Mobility



**Identify a course and get in touch with Junia through PU International Office**



**Eligible for Erasmus+ funding**



**Meals and lodging provided under certain conditions**



**Language of instruction : English or French**



**Blended learning and on-line teaching are welcome !**



# Practical information

# Practical Information

## Accommodation



### On Campus : ALL residence halls

- Single rooms
- Shared or individual bathrooms
- Common kitchen
- Near the school

### Off Campus: Estudines , Nexity Studea, Twenty Campus, Studapart

- Private student residences near the campus
- Apartments sharing



**More information will be given to the selected students in our International Student Guide**



## Visa & Insurance

### Visa

- Student visa is mandatory if you want to study in France
- Student Visa application to be done in your country of origin
- If you get a Visa long séjour valant titre de séjour, you will be able to request the housing allowance

### Health Insurance

- Mandatory
- Must have your own insurance for the 1st month of your stay (or for the whole stay if you prefer)
- Registration to the French Social Security upon arrival.



**The International Student Office (ISO) is there to guide you and help you from the start!**

# Practical Information

## Cost of living in Lille



### MONTHLY BUDGET ESTIMATION

<b>Housing</b>	350 – 600 euros
<b>Food</b>	150 - 200 euros
<b>Transportation</b>	25 euros
<b>Phone &amp; internet</b>	30 euros
<b>Leisure/hobbies</b>	100 euros
<b>TOTAL</b>	<b>800-1000 euros</b>

### Additional expenses for semester exchange :

- Visa stamp: approx. 50€
- Insurance for accommodation: 30€
- Refundable accommodation deposit (1 to 2 months' rent)

## Academics

### Academic Calendar

- Fall semester: end of August to end of December
- Spring semester: early January to mid-June

### European Credit Transfer System (ECTS)

- 1 semester = 30 ECTS credits
- Exchange students should take at least 20 ECTS credits

### Transcript of records sent to home university

- Validation of the credits by your home university

# Application

## Deadlines:

- Fall semester (late August – late December) or academic year : **May 31, 2025**
- Spring semester (early January – end of April/May): **October 31, 2025**



## Procedure

- Instructions will be sent to you after nomination

**Admission:** after reviewing your application, we will send the letter of acceptance within 3 weeks



Welcome!

# Arrival in Lille

## International Student Association: Junia Globe

- ✓ Pick up service at Lille railway stations
- ✓ Buddy Program
- ✓ Student events throughout the year

Get in touch on WhatsApp



or

on Instagram



[@junia\\_globe](https://www.instagram.com/junia_globe)



# Program of the Welcome Session

**Welcome presentations and workshops**

**Cultural and Festive activities**

**Academic meetings**

**Intercultural and French classes**





MERCI DE VOTRE  
**ATTENTION !**

© Nicolas DUFOUR, Marc Paton, BlackBox Studio